



\* 260,000 - 280,000 \* Possibility of No Onward Chain. Three DOUBLE bedroom terraced house with open plan living accommodation, a generous GARDEN and utility room. Positioned within easy reach of AMENITIES, schools and travel links including WESTCLIFF TRAIN STATION!

Located in the heart of Westcliff-on-Sea within easy reach of favoured amenities including shops, eateries, parks and the Palace Theatre, is this three bedroom terraced house. For commuters, there is access to bus links, the A127, London

- Spacious Terraced House
- Large Kitchen
- Three Double Bedrooms
- Double Glazing
- Access to Travel Links
- Sizeable Open Plan Lounge/Diner
- Utility Room
- Low-Maintenance Garden
- Gas Central Heating
- Close to Favoured Amenities and Schools

## Balmoral Road

Westcliff-on-Sea

**£260,000**

Price Guide



# Balmoral Road



## Three Bedroom Terraced House

Porch  
Entrance Hall  
Lounge, Great Room 12'11" x 10'0"  
Dining Area 11'0" x 10'0"

Kitchen 13'1" x 10'1"

Utility Room 7'1" x 4'1"

Three Piece Bathroom 7'0" x 5'1"

Landing

Bedroom One 15'0" x 10'1"

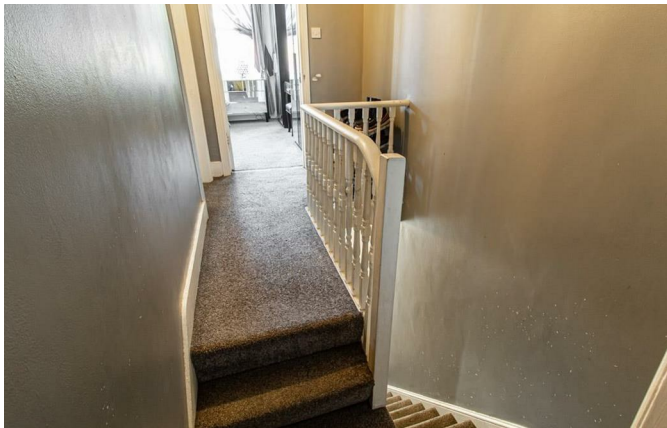
Bedroom Two 13'0" x 10'1"

Bedroom Three 10'1" x 10'1"

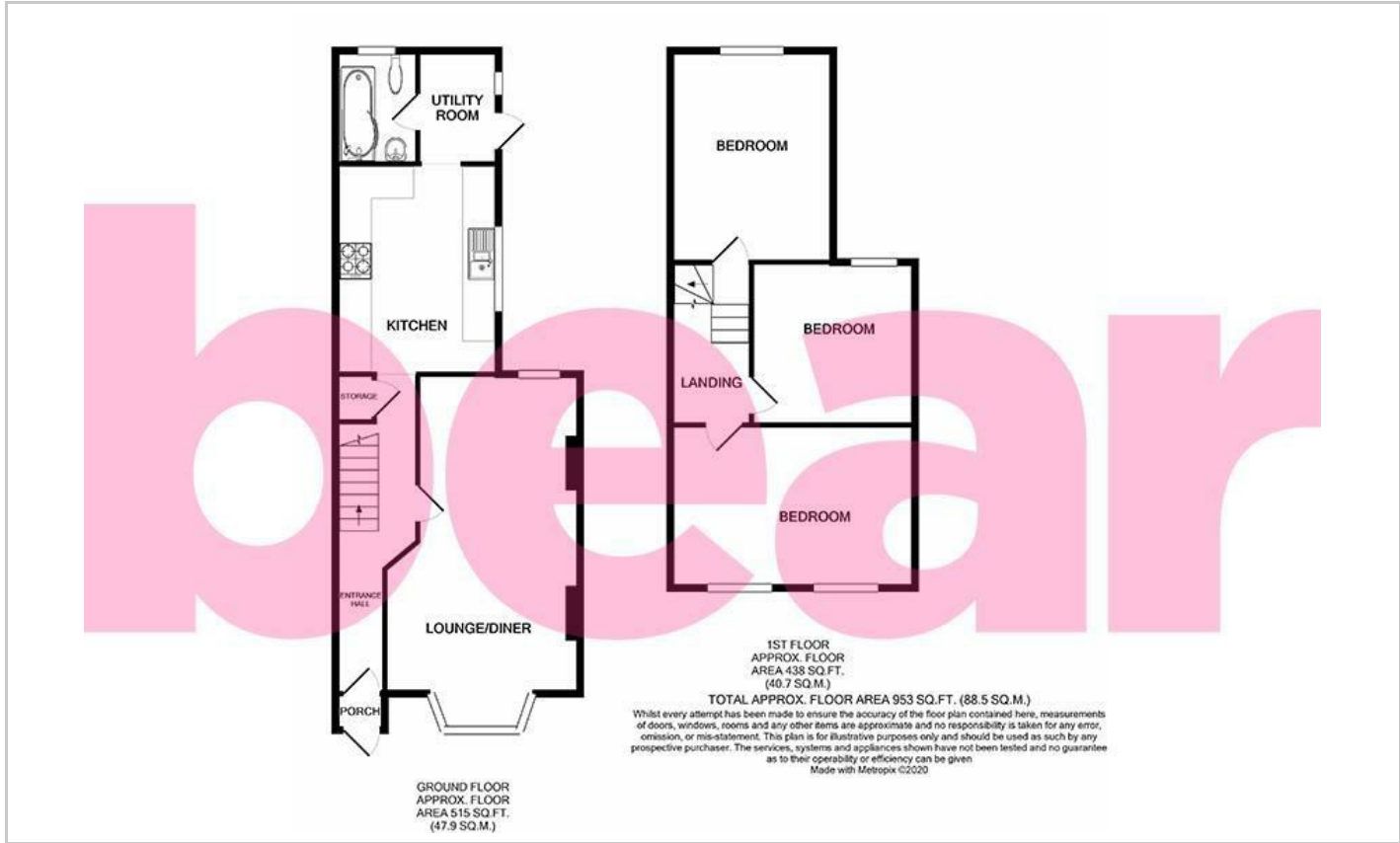
Low-Maintenance Garden  
EPC Report: TBC

CALL BRIDGESTONE AGENTS TO VIEW!





Floor Plan



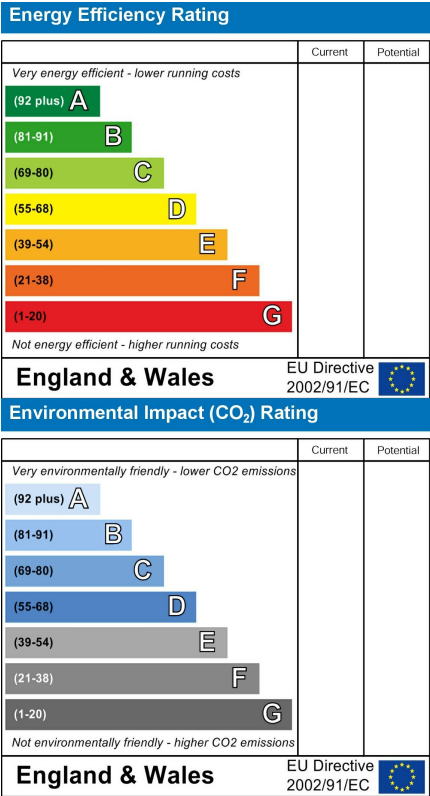
Area Map



Viewing

Please contact our Southend-on-Sea Office on 01702 811211 if you wish to arrange a viewing appointment for this property or require further information.

Energy Efficiency Graph



These particulars, whilst believed to be accurate are set out as a general outline only for guidance and do not constitute any part of an offer or contract. Intending purchasers should not rely on them as statements of representation of fact, but must satisfy themselves by inspection or otherwise as to their accuracy. No person in this firm's employment has the authority to make or give any representation or warranty in respect of the property.

Beech House, 1 Journeymans Way, Temple Farm Industrial Estate, Southend-on-Sea, Essex, SS2 5TF

Office: 01702 811211 [info@bearestateagents.co.uk](mailto:info@bearestateagents.co.uk) [www.bearestateagents.co.uk](http://www.bearestateagents.co.uk)